

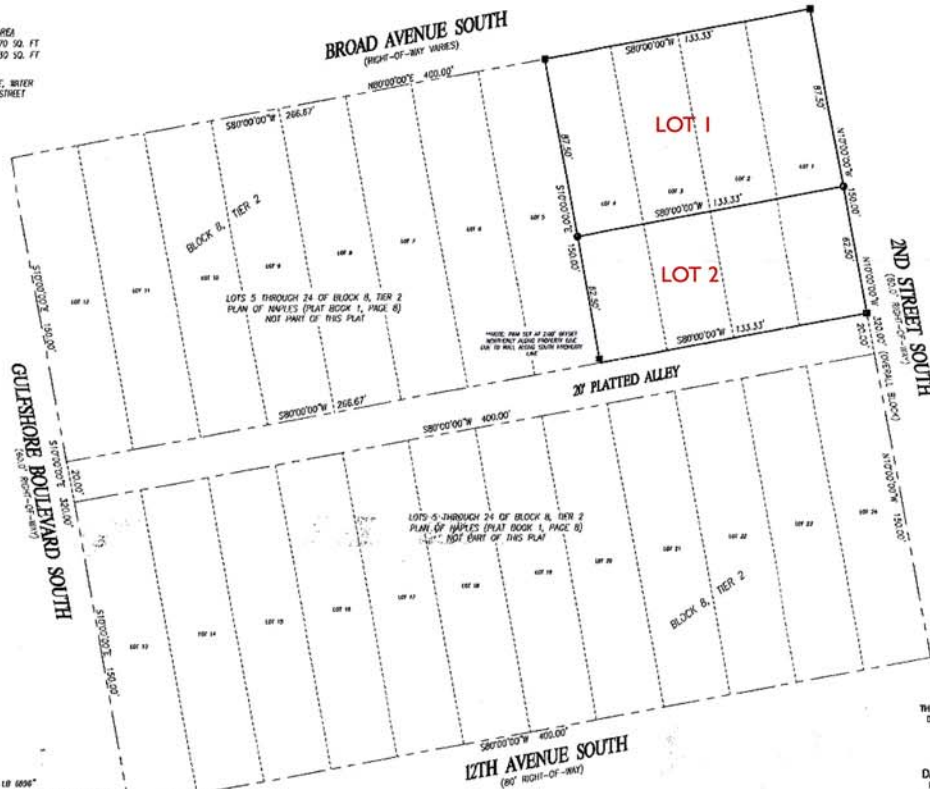
WATSON SUBDIVISION
A REPLAT OF LOTS 1-4, BLOCK 8, TIER 2, PLAN OF NAPLES
AS RECORDED IN PLAT BOOK 1, PAGE 8, PUBLIC RECORDS OF COLLIER COUNTY, FLORIDA
LYING IN SECTION 9, TOWNSHIP 50 SOUTH, RANGE 25 EAST, CITY OF NAPLES, COLLIER COUNTY, FLORIDA

PLAT BOOK **50** PAGE **2**

SHEET 2 OF 2

LOT DATA	WIDTH	LENGTH	AREA
F1	62.50'	133.33'	8,332 SQ. FT.
F2	62.50'	133.33'	8,332 SQ. FT.

NOTICE
 LANDS DESCRIBED IN THIS PLAT HAVE DRAINAGE, WATER & SEWER FACILITIES AVAILABLE ALONG PUBLIC STREET FRONTAGE AND PUBLIC ALLEY FRONTAGE.



LEGEND

- - 3/4" DIA. IRON PIN OR "DOW" IN 18 6896"
- - PIN - 4" CONCRETE MONUMENT STAMPED "PIN DOW INC. 18 6896"
- PM - PERMANENT REFERENCE MONUMENT

THIS INSTRUMENT WAS PREPARED BY

DAVID S. DAGOSTINO, PSM #5782



DAGOSTINO & WOOD, INC.
 Professional Surveying & Mapping
 610 23rd Avenue NE Naples, FL 34109
 Phone: (239) 551-0505 Fax: (239) 551-0505
 Florida Certificate of Authorization No. 6096

1170 Gordon Drive

Lot 2 – A replat of a portion of Block 8, Tier 2, Plan of Naples as recorded in Plat Book 1, Page 8, Public Records of Collier County, Florida lying in Section 9, Township 50 South, Range 25 East, City of Naples, Collier County, Florida

Approximate Measurements

Lot Dimensions: 133.33 ft. x 62.5 ft.
Lot Square Footage: 8,333.13
Acres: 0.19



Pamela S. Watson • 239.860.9411 Cellular • 239.348.2500 Office • 239.261.1814 Fax